

# Points of Interest & Marine Events

## From Oak Grove Marina

### *Half Day Outings*

#### South River

**1. Yellowfin Steak & Fish House** - Colorful and contemporary, with a bank of windows overlooking the sparkling South River, Yellowfin puts sizzle in a summer evening. Start with a selection from the martini or margarita menus, then enjoy light fare, salads, steak or seafood as you watch the sun go down. Boaters can call ahead to arrange docking at nearby Liberty Marina. Yellowfin Steak & Fish House, 2840 Solomon's Island Rd., Annapolis, 410-573-1333. Dinner daily.

**2. Paul's on the South River** - With more than half-a-century at its waterfront location, Paul's has pleased generations of Annapolitans with its fine food and elegant service. Crab, shrimp, steak, poultry and vegetarian choices are featured. The summer season brings with it a light menu at Paul's, with salads, sandwiches and specials featuring light sauces and freshly grown herbs. A place for a special occasion. Paul's on the South River, 3027 Riva Rd., Riva, 410-956-3410. Lunch Tuesday through Friday, dinner Tuesday through Sunday. Closed Monday.

**3. Mike's Restaurant & Crab House** - As the name implies, Mike's specialty is crabs-steamed, soft-shelled, in crab cakes or crab imperial. And the place to enjoy them is Mike's open-air tiki bar, where you can pull up, dock, dine, and dance to live music on the weekends. This South River landmark has lots of other options, too (ribs, steak, chicken and seafood), but for authentic Chesapeake flavor, you won't go wrong with the ol' crustaceans. Mike's Restaurant & Crab House, 3030 Old Riva Rd., Riva, 410-956-2784. Lunch and dinner daily.

**4. South River Café** - There's plenty of room to relax indoors and out at the South River Café, formerly Surfside 7. On a summer evening, you can sip a drink (from one of four bars) and watch the boats go by while anticipating a meal of stuffed rockfish or grilled steak. Patrons arriving by boat (the café is just beside the South River Bridge) can dock at the end of the pier. South River Café, 48 South River Rd., Edgewater. 410-956-8075. Lunch and dinner daily; open until 2 a.m.

**5. Historic London Town and Gardens** – Located on **Almshouse Creek**, this 23-acre Anne Arundel County owned park contains the refurbished William Brown house, a National Historic Landmark, over eight acres of gardens and on going archaeological excavations. Boaters can dock free at a private pier (4-foot depths) while touring the site.

#### Annapolis Waterfront – 13 Miles from Oak Grove Marine Center

**1. Annapolis City Marina** - The entrance to Annapolis is quite easy to navigate, although shoals do exist. As you round "Greenbury Point" honor the large "spider buoy" platform light (FL. 4 sec. - 40 ft. 8m). From the spider you can follow the fairway marked by cans, bells, and nuns for about 3/4 mile. This will allow you to clear "Horn Point" shoal to port (FL. 6 sec. PA). The Severn River and the U.S. Naval Academy will be directly in front of you. Bearing to port you will enter Annapolis Harbor. At the split channel marker bear left leaving the mooring field to starboard. Approaching the Spa Creek Bridge, Annapolis City Marina is the large gray and red facility to port. From Annapolis City Marina you can catch a water taxi to many locations within Annapolis for \$2.00. Latitude 38° 58' 34", Longitude 076° 29' 03" Telephone 410-268-0660, Monitors VHF channel 9

**2. Buddy's Crab and Ribs** - Ribs, jumbo crabcakes, salads, steaks and more: whatever your appetite desires, Buddy's can deliver. The spacious dining room overlooking City Dock and Main Street offers great views, and the atmosphere is relaxed and friendly. Bring the kids: ages 10 and under eat free. Buddy's, 100 Main Street, Annapolis, 410-626-1100. Lunch, dinner and Sunday brunch.

**3. City Dock Café** - As a purveyor of fine coffees and products, City Dock Coffee is committed to providing the best to our customers at all times. And with the help of our many coffees from all around the world, our customers can relax and enjoy all that each of our unique locations has to offer, providing an environment away from the daily grind of everyday life!

**4. Griffins** - Griffins is nestled among a shopping and sightseeing haven. Have lunch and experience the unique charm of the world's sailing capital or visit us for dinner to check out Annapolis's extraordinary nightlife.

**5. Ego Alley Tropical Grill** - Maybe you're not the guy in the Hawaiian shirt, but that doesn't mean you can't appreciate the tropical style and decor of Ego Alley. This hip joint serves a variety of Caribbean cuisine, but also offers traditional options for the less adventurous. Ego Alley has outside tables just across from the Harbor. The drink specials change daily, and many a local band has been known to perform upstairs at Samson's Music Lounge. Ego Alley, 136 Dock St., Annapolis, 410-263-3353. Lunch and dinner.

**6. O'Brien's Oyster Bar and Grill** owned and operated by Jerry Hardesty. Jerry brought back the emphasis on Chesapeake Cuisine and Annapolis Hospitality. The décor pays homage to the sports heroes of the Naval Academy as well as the history of Annapolis. Any property that has been around as long as O'Brien's has its ghosts. O'Brien's is supposedly the home to a few. During its long life the building has seen the scene of a few notable events, not to mention the use of the upstairs as a place of "ill repute." The storage rooms where liquor and other such items are now stored, used to be tiny bedrooms. Now of course the trade is in food and in fun. Whatever the century or decade, O'Brien's at 113 Main Street Annapolis is the place to be in Downtown. With live entertainment nightly and a great menu.

**7. Middleton Tavern** - For a prime view of the City Dock parade, look no further than Middleton Tavern. The covered porch offers some of the city's most coveted summer seating; it's a great place to recharge with a beverage and an selection from the very generous menu (steaks, seafood, crab cakes, salads and more). The mussels and crab dip here were voted the best in Annapolis-taste and see. Middleton Tavern, 2 Market Place, Annapolis, 410-263-7973. Lunch, dinner, Sunday brunch.

**8. Pusser's Landing at the Marriott** - A chair on the deck at Pusser's Landing at the Marriott is about as close as you can get to Ego Alley. Catch the always-lively waterfront scene at lunch or dinner from Pusser's Dining Dock or Dock Bar, each with 16 tables. (No reservations are accepted for outside seating-they're for inside only-but the view from the dining room is swell, too.) The menu features Caribbean-style seafood, steaks, sandwiches and burgers. For docking, call the Schooner Woodwind at 410-263-7837 to inquire about a berth at the marina adjacent to the Marriott, Pusser's Landing at the Marriott, 80 Compromise Street, Annapolis, 410-626-0004. Breakfast, lunch, dinner and Sunday brunch.

**9. Phillips Annapolis Harbor** - Serving regional seafood and mouth-watering crab many ways for 40-plus years, the Phillips family knows what makes a perfect Bay repast. Their downtown Annapolis location, with a sweeping view of City Dock and the harbor, offers a covered outdoor patio and an indoor dining room and lounge where diners can dip into appetizers, soups, sandwiches, two kinds of crabcakes and lots more. Phillips Annapolis Harbor, 12 Dock Street, Annapolis, 410-990-9888. Lunch and dinner daily.

**10. MARIAS SICILAN RISTORANTE & CAFE** - 12 MARKET SPACE, ANNAPOLIS, MD 21401 410-268-2112. Welcome to our picturesque restaurant at the city dock in historic downtown Annapolis. Even before my family and I arrived in America from Sicily in 1969, we had a vision to create an intimate and quaint restaurant in true Sicilian style to share with our new friends. We take great pride in using old family recipes and individually preparing, to your satisfaction, authentic Sicilian cuisine from the freshest ingredients available. Please relax and enjoy our warm and friendly service, as we prepare the finest Sicilian cuisine especially for you.

**11. WELCOME TO RIORDAN'S SALOON** - Located in historic downtown Annapolis, Maryland, Riordan's has been a landmark for over twenty years. Our restaurant and the charm of our city offers something for everyone, locals and tourists alike. Tel: (410) 263-5449

### **Eastport – 13 Miles from Oak Grove Marine Center**

**1. Carrol's Creek Café** - A dazzling makeover has only enhanced the appeal of Carrol's Creek Café, where diners enjoy four-star cuisine both indoors and out, along with one of the capital's best water views. The contemporary American offerings include plenty of seafood, as well as original takes on meats and pastas. Don't miss the cream of crab soup-and the desserts. Carrol's Creek Café, 410 Severn Ave., Annapolis, 410-263-8102. Lunch, dinner, Sunday brunch. Located on Spa Creek at the Annapolis City Marina.

**2. Chart House** - Now restored to fabulous condition after a dousing by Hurricane Isabel, Chart House is the place to take out-of-towners for a taste of Annapolis. The views of sailboats, Spa Creek and the city skyline from the high-ceilinged dining room are exceptional, as are the upscale offerings of salad bar, steaks, and seafood. Chart House, 300 Second St., Annapolis, 410-268-7166.

**3. O'Leary's Seafood Restaurant** - With rave reviews for its fresh, fabulous renditions of seafood, O'Leary's is a top choice for dinner anytime. Enjoy a wide variety of menu items and specials prepared to your specifications in handsome surroundings just off Spa Creek. O'Leary's Seafood Restaurant, 310 3rd Street, Annapolis, 410-263-0884.

**4. Boatyard Bar & Grill** - It's an airy, attractive eatery, a neighborhood gathering spot, and one of the country's hottest sailing bars-all good reasons to check out Eastport's Boatyard Bar & Grill. Stop by for lunch, dinner and weekend breakfasts, or satisfy happy-hour hungries with tasty "small plates" from the Bar Menu. Boatyard Bar & Grill, 400 Fourth Street, Annapolis, 410-216-6206. Across the street from Annapolis City Marina.

**5. Davis' Pub** - Voted "best local watering hole" in Annapolis, Davis' has casual food and drink and a friendly, laid-back atmosphere that pleases both natives and tourists. After a fishing trip or afternoon sail, it's the place to unwind with a cold drink and an order of burgers, shrimp, steak or crab cakes. Davis' Pub, 400 Chester Ave., Annapolis, 410-268-7432. Lunch, dinner.

**6. Back Porch Café** – Located at the Annapolis Landing Marina open for Breakfast and Lunch.

**7. Mears Marina Poolside Café** – Call for slips availability 410-268-8282. Vessels above 30' require reservation.

### **Chesapeake Harbour – 12 Miles from Oak Grove Marine Center**

**1. Sam's Waterfront Café – Fl R4s 14Ft. "2", 38° 57'6"N, 076°28'0"W.** 2020 Chesapeake Harbour Drive East, Annapolis, MD 21403 410-263-3600. HOURS OF OPERATION: Monday thru Thursday:  
2820 Solomons Island Rd (410) 266-6696  
Edgewater, MD 21037 dave@boatoakgrove.com

11:30am - 9:00pm, Friday - Saturday: 11:30am - 11:00pm, Sunday: 10:30am - 9:00pm. Reservations: Recommended, Credit Cards: All major cards, Parking: Plenty of on-site parking, Boat Access: Transient slips available Access: Wheelchair Accessible. Equally casual and elegant, Sam's Waterfront Café serves up American cuisine with a regional Flair. This "Zagat's " award wining restaurant is located within the marina in the bayside community of Chesapeake Harbour and has both inside and outside dining for your pleasure. The architecture of the exterior was modeled after the area's famous Thomas Point Lighthouse. Inside, Sam's can accommodate over 76 diners with spectacular waterfront views and an additional 25 at the bar which looks out onto the marina. With live jazz on Friday and Saturday nights, this restaurant is an Annapolis experience you do not want to miss. As the weather turns, be sure to experience dinning and drinks at the outside deck bar. Whether cruising by land or water you will surely enjoy the fine dining, impeccable service and ambiance that this Annapolis landmark provides. Owner Andrew Parks offers a truly diverse wine selection that has won the Wine Spectators "Award of Excellent" year after year. Executive chef Philip Sokolowski is regionally renowned for his creative and consistently excellent food. His menu, heavy on fresh seafood, also offers a variety of meat and pasta dishes, as well as exceptional weekly specials. Sam's menu changes seasonally to always offer you a little local surprise. Sam's is also available for special events and catering. All vessels arriving need to contact the marina office, by phone or VHF radio channel 16, to make docking arrangements. The marina staff works with the restaurant to insure that all dinner guests have convenient dockage location. It is wise to call for restaurant reservations, especially in the warm seasons and always for weekends and holidays.

### Whitehall Bay – 14 Miles from Oak Grove Marine Center

**1. Mill Creek - Cantlers Riverside Inn - Free boat dockage for our patrons!** An Annapolis, Maryland icon, Cantler's waterfront restaurant and crab house has been serving the area's freshest seafood to watermen, boaters, and land lovers alike for 3 decades. Sheltered in the quiet waters of Mill Creek, Maryland and just minutes from Annapolis City Dock, Cantler's prepares steamed Maryland blue crabs, clams, oysters, shrimp and fish... all served piping hot and ready to enjoy in the atmosphere reminiscent of Maryland's Chesapeake Bay heritage. Come as you are to Jimmy Cantler's Riverside Inn and discover Annapolis as you never have before. Cantler's Riverside Inn, where the watermen gather for fresh seafood and steamed Maryland blue crabs 7 days a week, all year 'round. **Open for Lunch & Dinner Sun. - Thurs. 11:00 a.m. to 11:00 p.m. Fri. & Sat. 11:00 a.m. to midnight**

**Sandy Point State Park - Boating** - The marina facility includes six finger piers available for day use on a first come, first served basis. The Marina Store offers bait, tackle, fuel and fishing and crabbing licenses, snacks and drinks, and limited picnic supplies. Call the Sandy Point Marina 410-974-2772. The marina pumpout is available April through November at no charge.

### Severn River

**Severn Inn** - Located on the North bank of the Severn River at the foot of the Naval Academy Bridge this restaurant offers fine dinning and spectacular views of the Naval Academy and the mouth of the Severn River. Dinner menu runs between twenty five and forty dollars while lunch ranges from twelve to twenty dollars, a dress code is upheld. The piers to the west of the restaurant can accommodate any vessels in the Carefree Fleet, however the there are ruins of piers remaining to the east of the restaurant which they have plans to replace. 410-349-4000, www.severninn.com **13.5 Miles from Oak Grove Marine Center**

### Kent Island

**Kentmorr Harbour** - 5 miles south of the Bay Bridge. Turn east at yellow nun buoy "S." Steer toward Kentmorr Beacon. Stay within channel markers. **10.5 Miles from Oak Grove Marine Center**

2820 Solomons Island Rd  
Edgewater, MD 21037

(410) 266-6696  
dave@boatoakgrove.com

**1. Princers Crab Deck & Dock Bar** - Beautiful waterfront restaurant with sunset views of the Chesapeake Bay, Annapolis and ships of the world. Founded in 1954 by Bill Morris, Kentmorr Restaurant is now skillfully run by Dave and Tammy Harper and a dedicated staff numbering close to 100 in the busy season. Kentmorr has been a sportsmans paradise since day one and continues to provide the finest in Chesapeake Bay sportfishing, windsurfing or swimming. We provide the perfect vantage point for your Chesapeake Bay experience. Award winning crabcakes, local crabs, fish and oysters add to your enjoyment of one of the worlds finest estuaries. Price range \$7.00 to \$25.00.

**2. Silver Swan Restaurant – Queen Anne Marina** Swans, osprey, blue herons and ducks decorate the non-stop Bay views at the waterfront Silver Swan Restaurant. Dine inside on elegant Eastern Shore fare at lunch or dinner, or enjoy cocktails on the patio. The adjacent Silver Swan Store will fill your picnic basket with a variety of take-out items (fish platters, BBQ burgers, selections from the restaurant menu, and even ice cream). There are 10 slips for boaters; call ahead for reservations. Silver Swan Restaurant, 412 Congressional Drive, Stevensville, 443-249-0400, Closed Mondays.

**3. Hemingway’s Restaurant and Crab House** – Located at the Bay Bridge Marina, Pier 1 410-643-2722.

### West River

**1. Pirates Cove Restaurant & Marina (Big Mary’s Dock Bar)** – There's always something happening at Pirates Cove all year round. Here you can enjoy classic seafood dining, watch sailboats cruise the marina from Big Mary's Dock Bar or stop by the lounge for dancing and live entertainment. If you need a place to stay - we have 5 comfortable rooms equipped with Cable TV, Phone, Private Bath/Shower and more... From the Chesapeake Bay go West into the mouth of the West River. Rhode River will be Starboard (right) and Parrish Creek is Port Side (left). Proceed inward following your markers. The Pirates Cove Restaurant and Marina will be Starboard (right). Look for the sign at the end of the pier.

## *Full Day Outings*

### **Kent Narrows – 25 Miles from Oak Grove Marine Center**

**1. Annie's Paramount Steak & Seafood House**, located on Maryland's Eastern Shore on the Kent Narrows. Here on the Eastern Shore, views of the Kent Narrows and the Chester River afford a dramatic and beautiful background for dinners and events hosted by Annie's. Dedication and commitment to quality food and service has made Annie's one of the top destinations in Queen Anne's County. In addition to our fully operational restaurant, we have expanded our banquet and catering business. With three dining areas and a spacious deck overlooking the Kent Narrows and Chester River, Annie's is a great place for your next gathering. Whether a small party, private room or an off site event, Annie's will cater to your every need. Boaters may contact Mears Point Marina for docking instructions on VHF Channel 9 or at 410-827-8888. Lat 38° 58' 24" N Long 76° 14' 46" W

**2. Fishermans Inn & The Crab Deck** - Imagine a place.... where the waterside atmosphere is casual and lively, the crabs are hot and spicy, the drinks are cool and the sunsets are spectacular. This is it! You'll find it all right at the water's edge at the Crab Deck! Menu features fresh fish, shrimp, scallops, lobsters and clams from our seafood market. We steam, grill or fry and serve you in a relaxed but exciting tropical atmosphere, open on all sides right at the water's edge. **Come by boat....docking is free!**

**3. Harris Crab House** - Hungry? Head for Harris' Crab House and its \$24.95 all-you-can-eat shrimp and crab feast, offered Monday through Fridays. This waterside eatery, decorated with antique oyster tins and other sea memorabilia, is a favorite of Kent Islanders and many drop-ins who visit by boat (*its five slips are first-come, first-served*). Dine inside or on the roof-top for an unmatched view. Harris Crab House, Exit 42 at Route 50, right turn under the bridge, Grasonville, 410-827-9500. Lunch and dinner daily.

**4. The Jetty - Free Boat Docking.** For waterfront fun on Kent Narrows, head for The Jetty, where there's always a happy crowd at the Dock Bar and live music Wednesday through Sunday. Steamed crabs are available (call ahead to check), along with lots of appetizers, wraps, sandwiches, steaks, seafood-and yes, fries by the pound. The Jetty, 201 Wells Cove Rd., Grasonville. 410-827-4959.

### **Magothy River – 20 Miles from Oak Grove Marine Center**

**1. Deep Creek Restaurant** - Set back in a residential neighborhood in Arnold, the pleasant ambience and views of Deep Creek and the Magothy River are surpassed only by the quality and taste of the unique fare. Featuring creative and tempting dishes like the signature baked salmon strudel; a fresh salmon steak topped with the perfect combination of spinach, artichoke hearts and boursin cheese wrapped inside a crispy, light phyllo dough, garnished with a dill cream sauce. After the main course, choose from a tempting array of desserts including the incredible white chocolate banana mouse and warm raspberry pie. Deep Creek Restaurant is truly a delight when compared to the common restaurant experience. Come discover the best-kept secret in the area. Water depth is shallow at the bulk head behind the restaurant.

## *Overnight Outings*

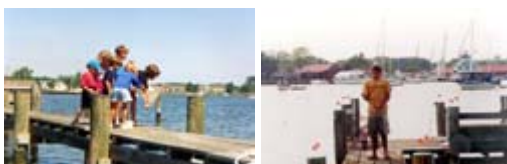
**White Hall Bay - Chesapeake Bay Lighthouse Bed & Breakfast.** Built by Bill and Janice Costello to resemble the famous Thomas Point Lighthouse, this place has it all. Located only six miles from Annapolis, Maryland, a true colonial town with cobblestone streets, the nearby Naval Academy, the blue waters of the Chesapeake, 200 feet of waterfront, panoramic views, sail boats, blue heron, osprey and more, this place is like heaven. Attached to the lighthouse is a lovely 70 year old Dutch Colonial home. The lighthouse, called Sharp's Point, is even sanctioned by the Coast Guard. All in all, you get 9 bedrooms, 9 baths, a private pier and what could become a lifetime of memories.

**Saint Michaels – Dr. Dodson House Bed & Breakfast.** 200 Cherry Street, St. Michaels, MD 21663 Telephone 410-745-3691. Overnight accommodations can be made for a boat at either Higgins Boat Yard, the Chesapeake Bay Maritime Museum, St. Michaels Marina or the Dock adjacent to the Town Dock Restaurant.

**Saint Michaels – Bay Cottage,** the premier St. Michaels, Maryland waterfront vacation estate, was named "The Best of the Bay" by Washingtonian Magazine, 2004. Enjoy special charm of Chesapeake Bay surroundings, elegant cottage architecture, glorious flowering gardens, and magnificent sunrise/sunset over water, idyllic waterside pool, deep water dock, sundeck on piling, and impeccable service at Bay Cottage. This beautiful 3.5-acre waterfront estate is on a tranquil point of land with wide water views on 3 sides of the property which includes a private harbor and a quiet cove. It is within walking or kayaking distance to the Village of St. Michaels. We would like to talk with you to understand your special needs and answer any questions you may have about the Bay Cottage accommodations and things to do in the St. Michaels Maryland area. Call Jackie or Bob Fletcher at 1-888-558-8008 or (410) 745-9369 or email us at [innkeeper@baycottage.com](mailto:innkeeper@baycottage.com) to discuss your reservation for a Bay Cottage visit. Bay Cottage offers a quiet and romantic getaway for ladies and gentlemen and therefore we accommodate only persons 18 and older.

**Saint Michaels – Broad Creek Bed & Breakfast** Relax by the river and enjoy the spectacular views and serenity. Peace and quiet is what we're all about. Only two guest rooms so privacy is assured. We'll do breakfast for you each morning on the glassed porch overlooking Broad Creek. Sit back under the large oak trees and let the Osprey and Purple Martins entertain you. Eastern Shore Living at its best. Contact: Bob Porter Phone: 410-745-0500, Toll Free: 1-866-745-0500, Fax 410 820 9396, Email: [bob@bcbcd.com](mailto:bob@bcbcd.com) Website: [www.BCBED.com](http://www.BCBED.com)

**Saint Michaels – Point Breeze Bed and Breakfast** In the traditional manner of an old fashioned B&B, guests are invited to visit with each other and their hostess in several areas throughout the house. In the summer months, the large screen porch and the shaded deck are equally inviting with spectacular views of the harbor boats, the wildlife, and breathtaking sunsets. For the cooler months you can find a fire burning in the Great Room or the Living Room, where you can curl up with a good book from the bookshelves. The Great Room also features a game table and cable TV/VCR. Two additional sitting rooms are available for your privacy. If your laptop has wireless capabilities and you would like to check your email while here, bring it along and enjoy Windows wireless access throughout the house. A wet bar with ice maker and wine cooler puts refreshments at your convenience. A sitting room provides you with information on many local attractions and restaurants. Outside always beckons where the grounds boast large shade trees, boxwoods, hollies and flowers. Try your hand at crabbing off the dock! Phone: **410.745.9563** - email: [pointbreeze@verizon.net](mailto:pointbreeze@verizon.net) [www.PointBreezeBandB.com](http://www.PointBreezeBandB.com)



**Saint Michaels – The Tarr House**, circa 1667, recalls the quiet elegance of a time past. This house, reputedly one of the oldest in St. Michaels, Maryland, is locally believed to have been built in the 1670's by Edward Elliott. It was Elliott who also built the first Episcopal Church in Saint Michaels on the nearby site of Christ Church. The Tarr House stands on the north side of Green Street in the center of historic St. Michaels, overlooking the St. Michaels Harbor and the Church Cove Park. This ideal location not only affords breathtaking views but also is within short walking distances of shops, restaurants, and museums. The first floor features a cozy sitting room with original heart of pine floors, a fireplace, and windows framing picturesque St. Michaels Harbor. Stroll through the romantic gardens and relax by the lily ponds in the rear yard. Enjoy your full, gourmet breakfast served on fine China. In the winter months, we light the fireplace in the dining room for a cozy breakfast. During the warmer season, central air conditioning keeps you comfortable. Phone: (410)745-2175 [www.tarrhousebandb.com](http://www.tarrhousebandb.com)

**St. Michaels – Two Swan Inn** located in the historic harborfront, nestled under the canopy of trees, our Inn is two short blocks from town center. In the warm months our guests enjoy perching themselves on the lawn overlooking the harbors' activities. In the winter months they enjoy the ambience of the crackling fireplace. All rooms have harbor view, private baths, and A/C. Continental breakfast is served from 8:30-9:45 a.m. We Welcome YOU!! \*\*\*Boat slips are available upon request. \*\*\*We are the home of the "Chesapeake Bay Log Canoe". Phone: 410 745 2929  
Website: [www.twoswaninn.com](http://www.twoswaninn.com)

## Fuel Docks

**Back Creek** – Annapolis Landing Marina

**Chester River** – Castle Harbor Marina

**Eastern Bay (Kent Island)** – Skip Jack Landing Marina, Lowes Wharf Inn, Mears Point Marina, Piney Narrows Yacht Haven

**Herring Bay** – Shipwright Harbor

**Kent Island** – Bay Bridge Marina & Yacht Club, Kentmorr Harbour Marina, Queen Anne Marina

**Magothy River** – Fairwinds Marina, Magothy Marina, Hamilton Harbor Marina, Gibson Island Marina

**Rhode River** – Rhode River Marina, Cadle Creek Marina

**Severn River** – Smith's Marina

**Selby Bay** – Turkey Point, Anchor Bay Marina

**South River** – Oak Grove Marine Center

**Spa Creek** – Annapolis City Marina

**West River** – West River Fuel Dock, Backyard Boats/Shady Side, Hartge Yacht Yard, Pirates Cove Marina

**White Hall Bay** – Cantler's

## Fishing

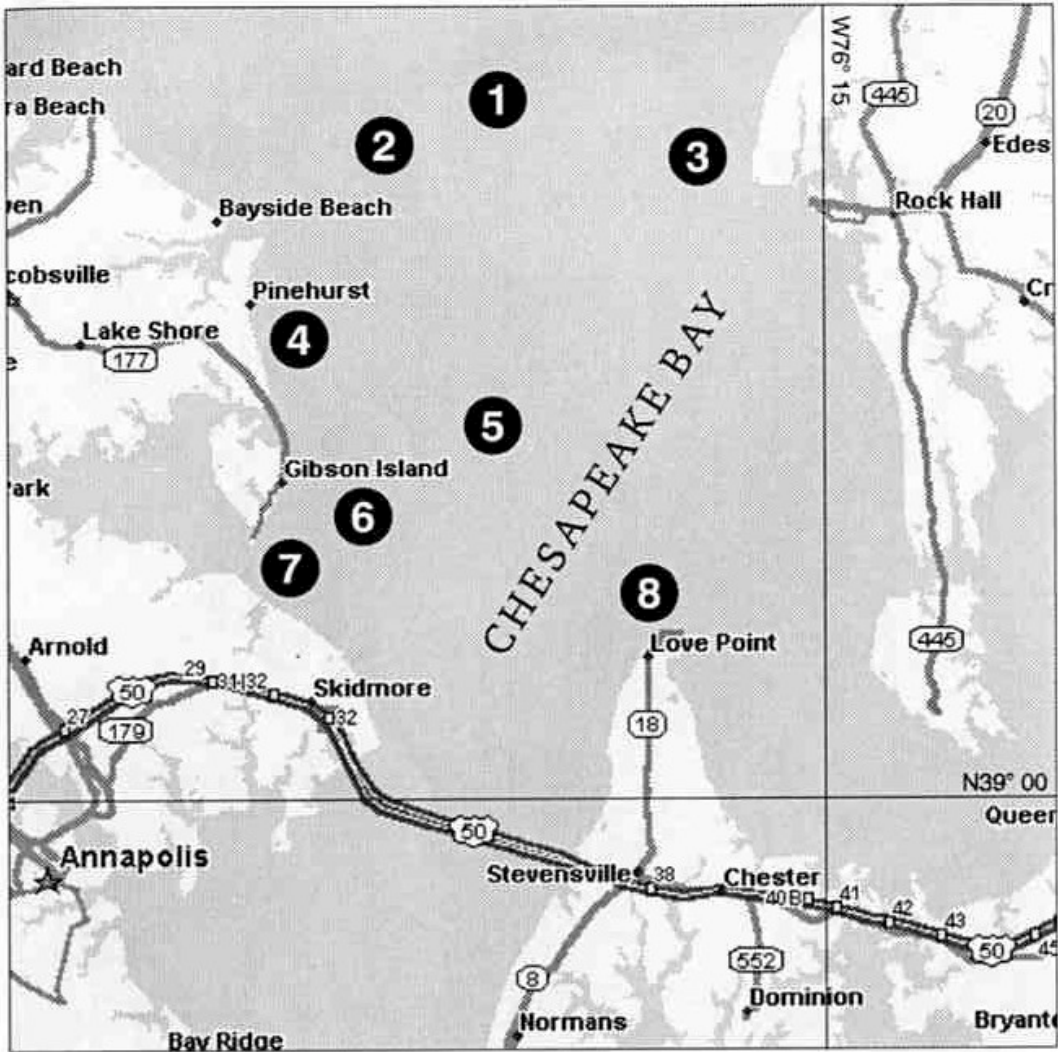
### Bait & Tackle

**Back Creek** – Bert Jabins Yacht Yard, A.B. Yachtsmen, Inc, Mears Marina

**Eastern Bay (Kent Island)** – Crab Alley Marina, Lowes Wharf Inn

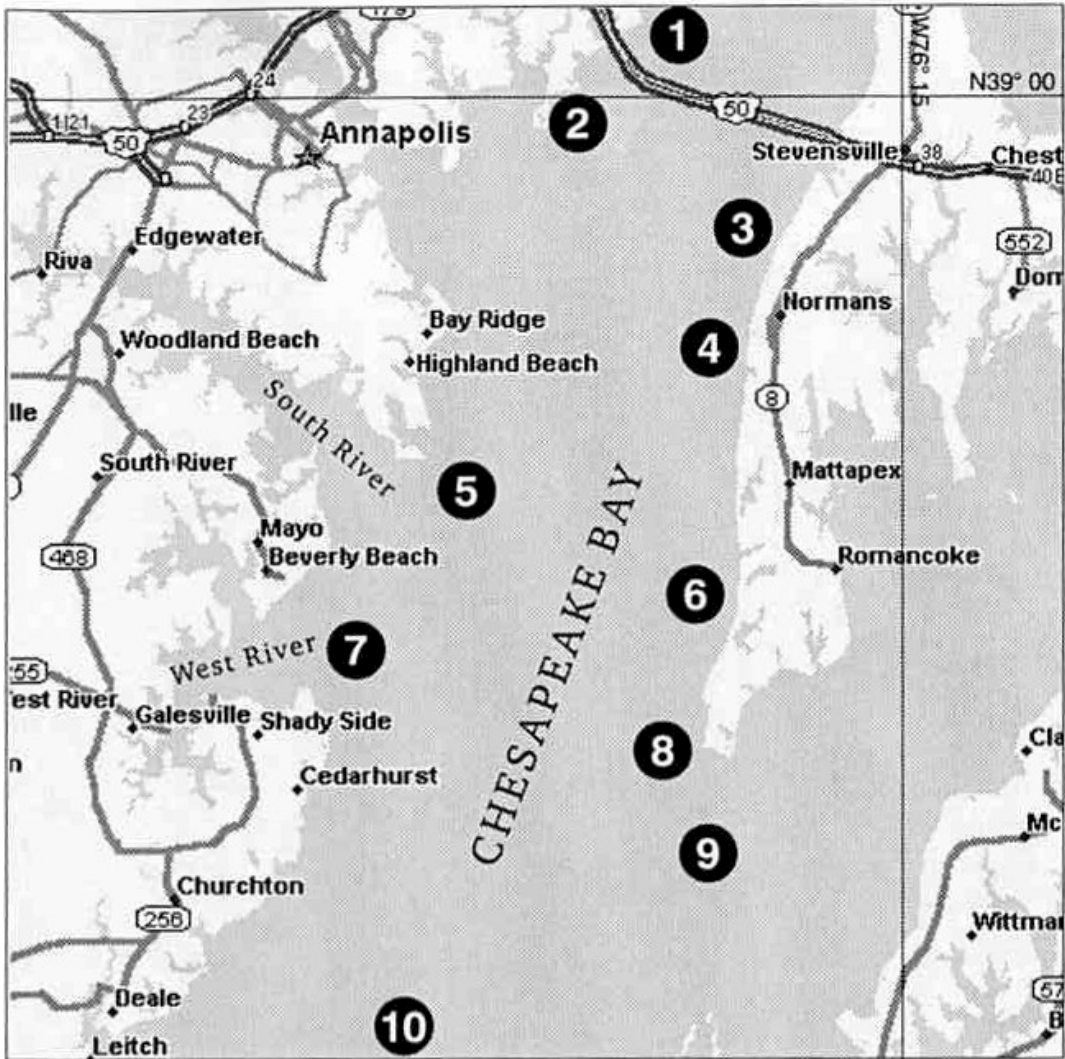
**Kent Island** – Queen Anne Marina

**Severn River** – Smith Marina



**MAP 2 - UPPER BAY - 9 Foot Knoll to Love Point**

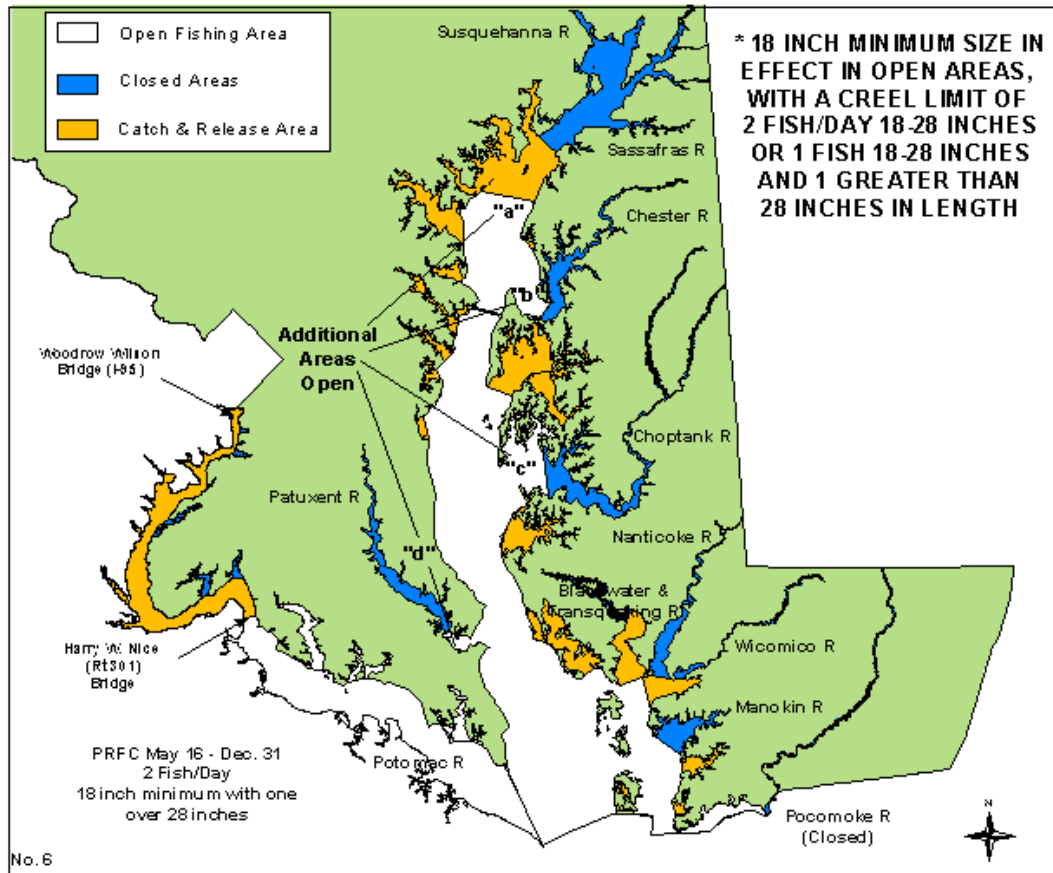
- 1** — 9 Foot Knoll . . . . . N39° 08.75' . . . W76° 21.87'
- 2** — 6 Foot Knoll . . . . . N39° 08.62' . . . W76° 21.89'
- 3** — Swan Point . . . . . N39° 07.86' . . . W76° 19.14'
- 4** — Snake Reef . . . . . N39° 06.61' . . . W78° 25.50'
- 5** — Belvedere Shoal . . . . . N39° 06.00' . . . W76° 22.01'
- 6** — Baltimore Light . . . . . N39° 03.50' . . . W76° 23.90'
- 7** — Podickery Point . . . . . N39° 02.10' . . . W76° 24.01'
- 8** — Love Point . . . . . N39° 03.47' . . . W76° 19.42'



**MAP 3 - MIDDLE BAY - Sandy Point Light to Buoy #83**

- 1** — Sandy Point Light . . . . N39° 01.01' . . . W76° 23.12'
- 2** Hackett's Bar . . . . . N38° 58.18' . . . W76° 25.09'
- 3** — Matapeake . . . . . N38° 57.64' . . . W76° 21.89'
- 4** Kentmoor Marina . . . . N38° 54.92' . . . W76° 22.29'
- 5** — Thomas Point Light . . . N38° 54.01' . . . W76° 25.83'
- 6** Gum Thickets . . . . . N38° 52.52' . . . W76° 23.22'
- 7** — Green Flasher . . . . . N38° 51.87' . . . W76° 27.02'
- 8** Bloody Point Light . . . N38° 50.24' . . . W76° 23.95'
- 9** — The Hill . . . . . N38° 46.85' . . . W76° 23.82'
- 10** Buoy #83 . . . . . N38° 45.09' . . . W76° 26.85'

## Striped Bass Regulations For May 16- May 31



### Recreational and Charter Boat Seasonally Open Area

(1) May 16 through May 31 for the areas described in Regulation .08D(1) and (2) of this chapter AND the following areas:

(a) All of the waters of the Chesapeake Bay and its tributaries enclosed by a line beginning at a point at or near North Point, defined by Lat. 39°11.71'N and Long. 76°26.53'W; then running approximately 156° True to a point at or near Buoy "2B" at the mouth of the Patapsco River, defined by Lat. 39°10.71'N and Long. 76°25.95'W; then running approximately 111° True to a point at or near Buoy "10", defined by Lat. 39°10.35'N and Long. 76°24.74'W; then running approximately 110° True to a point at or near Buoy "8", defined by Lat. 39°10.00'N and Long. 76°23.51'W; then running approximately 112° True to a point at or near Buoy "6", defined by Lat. 39°09.61'N and Long. 76°22.30'W; then running approximately 111° True to a point at or near Buoy "4", defined by Lat. 39°09.24'N and Long. 76°21.08'W; then running approximately 111° True to a point at or near Buoy "2BE", defined by Lat. 39°08.92'N and Long. 76°19.98'W; then running approximately 90° True to a point at or near Buoy "12", defined by Lat. 39°08.91'N and Long. 76°19.15'W; then running approximately 91° True to a point at or near Swan Point, defined by Lat. 39°08.88'N and Long. 76°16.69'W; then running northerly along the shore of Kent County to a point at or near the end of Maryland Route 20 at Tolchester, defined by Lat. 39°12.91'N and Long. 76°14.63'W; then running approximately 282° True to a point at or near the south corner of the Hart-Miller Island dike, defined by Lat. 39°14.23'N and Long. 76°22.44'W; then running north and west along the Hart-Miller shoreline to a point at or near the west end of Hart-Miller Island, defined by Lat. 39°14.36'N and Long. 76°23.19'W; then running approximately 206° True to a point at or near the east end of Pleasure Island, defined by Lat. 39°14.23'N and Long. 76°23.27'W; then running southwesterly along the Chesapeake Bay shoreline to a point at or near the west end of Pleasure Island, defined by Lat. 39°13.85'N and Long. 76°23.65'W; then running approximately 245° True to a point at or near the east

end of Back River Neck, defined by Lat. 39°13.76'N and Long. 76°23.91'W; then running southwesterly along shore to a point at or near the east entrance of Shallow Creek, defined by Lat. 39°12.25'N and Long. 76°25.95'W; then running approximately 251° True to a point at or near the west entrance of Shallow Creek, defined by Lat. 39°12.19'N and Long. 76°26.20'W; then running southwesterly along shore to the point of beginning, defined by Lat. 39°11.72'N and Long. 76°26.53'W;

(b) Chester River: All of the waters of Chester River and its tributaries upstream of a line beginning at a point at or near Love Point, defined by Lat. 39°02.40'N and Long. 76°18.16'W; then running approximately 83° True to a point at or near the northwesterly point of Eastern Neck Island, defined by Lat. 39°02.77'N and Long. 76°14.05'W; and downstream of a line beginning at a point at or near Hail Point, defined by Lat. 39°00.76'N and Long. 76°12.00'W; then running approximately 216° True to a point at or near Long Point, defined by Lat. 38°58.81'N and Long. 76°13.80'W; then running approximately 271° True to a point at or near Ferry Point, defined by Lat. 38°58.82'N and Long. 76°14.60'W;

(c) Choptank River: All of the waters of the Choptank River and its tributaries upstream of a line beginning at a point at or near Cook Point, defined by Lat. 38°37.73'N and Long. 76°17.35'W; then running approximately 317° True to a point at or near Blackwalnut Point, defined by Lat. 38°40.24'N and Long. 76°20.37'W; and downstream of a line beginning at a point at or near Holland Point at the west entrance of Irish Creek, defined by Lat. 38°41.88'N and Long. 76°13.61'W; then running approximately 174° True to a point at or near a point of land at the west entrance of Chapel Creek, defined by Lat. 38°36.59'N and Long. 76°12.91'W; and

(d) Patuxent River: All of the waters of the Patuxent River and its tributaries upstream of a line beginning at a point at or near Drum Point, defined by Lat. 38°19.14'N and Long. 76°25.27'W; then running approximately 119° True to a point at or near Hog Point, defined by Lat. 38°18.59'N and Long. 76°23.99'W; and downstream of a line beginning at a point at or near Point Patience, defined by Lat. 38°19.73'N and Long. 76°29.04'W; then running approximately 236° True to a point at or near the west point of land at the entrance of Little Kingston Creek, defined by Lat. 38°19.40'N and Long. 76°29.67'W.

## Dangers & Navigation Instructions

Holland Point (38°43.6'N., 76°31.7'W.), on the western shore of Chesapeake Bay 21.6 miles above Cove Point, has shoal areas extending in all directions; depths of 11 feet are 1.3 miles to the eastward and northeastward. Buoys mark the outer edges of the shoals. A fish haven, marked by buoys, is about 2.2 miles east-northeast of Holland Point.

Herring Bay, between Holland Point and the marsh 3 miles to the northward, has general depths of 14 to 7 feet. Long Bar, with depths of 2 to 5 feet, extends from the north side of the bay to within 1 mile of Holland Point, and is marked at its south end by a light. The mean range of tide is 0.9 foot.

Herrington Harbor, 0.6 mile westward of Holland Point, is entered through a jettied private channel from the south side of Herring Bay. The channel is marked by a 199° lighted range and other private aids. In 1995, the channel had a reported controlling depth of 7 feet. The channel is very narrow and must be followed closely to carry the best water. A small-craft facility is on the east side of the harbor just inside the entrance. Gasoline, diesel fuel, water, berths with electricity, and repairs are.

Rockhold Creek, at the northwest corner of Herring Bay, has good shelter for small boats. A marked dredged channel leads from the bay to a turning basin just below the fixed highway bridge at Deale. In April 2000, the controlling depths were 5.3 feet (5.7 feet at midchannel) for about 1 mile, thence 1.8 feet (3.0 feet at midchannel) to the head of the project. In June 2004, shoaling to 1.9 feet was reported in the vicinity of Daybeacon 3. Depths are 2.1 to 3.0 feet for about 0.4 mile above the bridge. A light marks the outer end of the breakwater on the north side of the entrance. The fixed highway bridge 1 mile above the entrance has a width of 47 feet and a clearance of 14 feet. The fixed highway bridge 1.8 miles above the entrance has an opening 41 feet wide with a clearance of 10 feet. ***A 6 m.p.h. speed limit is enforced in Rockhold***. There are extensive small-craft facilities on both sides of Rockhold Creek below the first bridge, and on the east side of the creek between the first and second bridges.

Parish Creek, on the south side of West River 0.5 mile westward of Curtis Point, is entered by a marked dredged channel which leads to an anchorage basin, and thence to Shady Side at the head of the south fork. In July 2002, the reported controlling depth was 6.1

West River, 8.5 miles above Holland Point, empties into the west side of Chesapeake Bay north of Curtis Creek Point (38°51.1'N., 76°29.9'W.). A marked fish trap area is off the entrance. The river has depths of 14 to 7 feet for about 4 miles, then shoals gradually to less than 3 feet in the tributaries. The river channel approach is marked by lighted buoys, and by lights and daybeacons to Galesville, on the west side of the river 2.5 miles above the entrance light.

Cadle Creek, on the east side of Rhode River 1 mile above the entrance light, has depths of 4 to 7 feet. The entrance to the creek is marked by daybeacons. Mayo is a town on the east side of the creek

Bear Neck Creek, on the north side of Rhode River 1.5 miles above the entrance light, has a depth of 9 to 5 feet for 1 mile. The entrance is marked by daybeacons.

South River, just north of west river, has channel depths of 14 feet or more to the second bridge, 6 miles above the mouth, then shoals gradually to 2 feet at the bridge near the head, 8.5 miles above the mouth. The river channel is marked to a point about 0.3 miles below the second bridge. Several of the creeks that flow into the river have good depths and are used extensively by local yachts and motorboats. Most of these tributaries are reported to provide good anchorage. There are commercial facilities above and below the first bridge. Minimum wake areas and a 6-knot speed limit are enforced in many parts of the river and in most of the coves and creeks that flow into the river. These areas are marked by regulatory

markers. State Route 2 fixed highway bridge at Edgewater, 5 miles above the mouth of South River has a clearance of 53 feet.

The entrance to South River is between Saunders Point and Thomas Point, 1.8 miles to the northeastward. Thomas Point Light (38°53'56"N, 76°26'09"W), 43 feet above water, is shown from a white hexagonal tower on piles, in depths of 5 feet near the outer end of the shoal 1.2 miles east-southeastward of the point; a fog signal is at the light. The light is 1.5 miles due west of a point on the bay ship channel 124.2 miles above the Capes.

Selby Bay, on the southwest side of South River 1.7 miles above the mouth, has general depths of 8 to 11 feet. The south end of the bay is shallow. The channel to Selby Beach, on the northwest side of the bay, is marked by lights and a daybeacon. Ramsey Lake has a narrow entrance from the south end of Selby Bay; in November of 1998, a depth of 5-1/2 feet was reported in the entrance, thence 7 to 8 feet in the lake. The fixed highway bridge over Selby Bay entrance to the lake has a width of 22 feet and a clearance of 14 feet.

Brewer Creek, on the southwest side of South River 3 miles above the mouth, has depths of 12 feet in the entrance, and 4-1/2 feet reported through the narrows 0.2 miles above the entrance. The narrows connect Brewer Creek with Pocahontas Creek to the southward. Gasoline, water, berths, and limited marine supplies are available in Pocahontas Creek; hull and engine repairs can be made.

Glebe Bay, on the southwest side of South River 3.5 miles above the mouth, has general depths of 13 to 15 feet. Care should be taken to avoid the 2 foot shoal near midbay and the 2 foot shoals along the northwest and southeast sides of the bay. Glebe Creek, with depths of 11 to 7 feet for about 0.4 mile, empties into the southwest side of the bay. Gasoline, water, and berths are available in the cove on the north side of the bay just inside the entrance.

Gingerville Creek, on the north side of South River extends along the westerly side of Edgewater. The creek has depths of 6 feet for 0.7 mile, nearly to the head. There are small-craft facilities at Edgewater, and in Warehouse Creek, on the south side of the river opposite Edgewater.

Beards Creek, on the south side of South River 5.7 miles above the mouth, has depths of 15 to 8 feet for 1 mile; a shallow spit extends halfway across the entrance from the point on the northwest side. In October 1978, a submerged piling was reported in beard Creek in about 38°56.6'N, 76°34.6'W. The highway bridge at Riva, 6 miles above the mouth of South River, has a fixed span with a clearance of 25 feet. Water, berths, and some marine supplies are available at Riva. Hull and engine repairs can be made; marine railway 40 feet.

Fishing Creek, immediately northward of the entrance to South River, has depths of 7 to 4 feet. A privately dredged channel leads from Chesapeake Bay to the Annapolis Coast Guard Station wharf on the northwest side of the creek. In 1982-1990, the marked channel had a reported controlling depth of 4-1/2 feet.

Severn River, the approach to Annapolis, empties into Chesapeake Bay 127 miles above the Virginia Capes. Commercial traffic consists of tour boats, fishing and shell fishing craft. Naval craft and many pleasure craft use the river. The river has main channel depths of 17 feet or more from the entrance to Annapolis, thence 15 feet or more for 8 miles, thence 11 to 7 feet for 2 miles to within 1 mile of the head. The channel is well marked as far as Annapolis, above which it is marked at the critical points and is easy to follow.

The entrance to Severn River is between Tolly Point and Greenbury Point, 2 miles to the northward. Tolly Point Shoal, with depths of 4 to 5 feet, extends 1 mile east-southeastward from the point; it is marked at its outer end by a light. The entrance to Lake Ogleton is on the southwest side of Severn River 0.8 mile above Tolly Point. The lake has depths of 5 to 9 feet, but the narrow entrance, marked by lights and daybeacon, in 1998, had a reported centerline controlling depth of 6 feet. The small private wharves

2820 Solomons Island Rd  
Edgewater, MD 21037

(410) 266-6696 15  
dave@boatoakgrove.com

along the shore of the lake are used mostly for mooring pleasure craft. There is a small-boat basin on the east side of Severn River, 11 miles above the mouth. The controlling depth to the basin is about 3 feet. Greenbury Point, is on the north side of the entrance to Severn River. Three towers on the point are prominent up and down the bay; each tower has a flashing red light on top and fixed red lights on the sides. A daybeacon marks the shoal extending 0.4 mile south of the point.

A naval deep-draft anchorage is southeast of Greenbury Point, and several smaller naval anchorages and prohibited anchorages are west and northwest of the point. (See 110.1 and 110.159, chapter 2, for limits and regulations.)

Carr Creek, is northwest of Greenbury Point. The creek has depths of 9 feet over the unmarked entrance bar and deeper water through a narrow channel inside. In 1998, shoaling was reported in about 38°58'59"N., 76°27'27"W. A naval rifle range is on the west side of the entrance to the creek. Mariners are warned to keep out of the creek when the red flag is flying from Carr Point or the next point southward. A detached breakwater is about 50 yards south of a pier that extends southeastward from the point south of Carr Point; another detached breakwater is about 125 yards southeastward of the same pier.

Back Creek, on the southwest side of Severn River 0.7 mile above the mouth, has depths of 7 to 9 feet for most of its 1-mile length. A light marks the outer end of the breakwater on the south side of the entrance, and lights and daybeacons mark the narrow entrance channel. In April 1980, shoaling to 3 feet was reported on the north side of the entrance in about 38°58.1'N., 76°28.3'W. The creek is used by fishing boats and pleasure craft. Berthing and repair facilities are located on the north side of the creek at Eastport, and on the south side of the creek. Diesel fuel and gasoline are available on the south side of the creek.

Spa Creek, on the southwest side of Severn River 1.4 miles above the mouth, has depths of 13 feet in the entrance channel, thence 12 feet to the Highway Bridge, and thence 10 to 6 feet for 0.7 mile to near the head. Drafts of vessels using the creek are mostly 10 feet or less. The Spa Creek highway bridge, about 0.4 mile above the entrance, has a 40-foot bascule span with a clearance of 15 feet. The bridge tender monitors VHF-FM channel 16 (156.80 MHz) and works on channels 13, and 68. The bridge tender can be reached by phone (410) 974-3840. (See 117.1 through 117.59 and 117.571, chapter 2, for drawbridge regulations.) Gasoline, diesel fuel, berths, electricity, pump-out station, water and ice are available on the north side of the creek just east of the bridge. Spa Creek waterfront has depths of 4 to 10 feet. Extensive marine facilities are on both sides of Spa Highway Bridge on the east of the Severn River. Creek above and below the bridge. Most of the boatyards are on the south, or Eastport, side of Spa Creek

Annapolis, the capital of Maryland, is on the north side of Spa Creek. The U.S. Naval Academy occupies the entire northeastern part of the city between Spa Creek and College Creek, 0.7 mile to the northwestward.

#### Harbor Regulations

The harbormaster has an office on the north side of Market Slip and enforces city regulations for the harbor. The harbormaster also controls municipal rental berths and mooring available in the harbor. A speed limit of 6 m.p.h. is enforced.

The Naval Academy Santee Basin, on the Severn River side of Annapolis has reported depths of 15 feet. The basin and seawall are within a restricted area.

The privately owned David Taylor Research Center extends from Carr Creek along the eastern shore of Severn River for about 1 mile to Ferry Point. The small-boat basin, 0.4 mile westward of Carr Creek, is a naval restricted area.

College (Dorseys) Creek, on the southwest side of Severn River 2.1 miles above the mouth, has depths of 11 to 8 feet for most of its 1-mile length; the best water in the entrance is along the south side. A fixed

footbridge, two drawbridges, one fixed bridge, and an overhead pipeline cross the creek from Annapolis southeast bank to West Annapolis on the northwest

Weems Creek, (39°00.0'N., 76°30.1'W.), on the southwest side of Severn River 3.2 miles above the mouth, has depths of 13 feet for 0.8 mile, thence 11 to 7 feet for 0.3 mile to near the head. A shoal extends 300 yards eastward from the point on the north side of the entrance, and is marked by a buoy. The highway bridge 0.5 mile above the entrance has a swing span with a width of 28 feet and a clearance of 5 feet. In July 1996, the drawbridge swing span was being replaced with another span; when completed, the reconstruction will only change the vertical clearance from 5 to 8 feet. The fixed highway bridge about 500 feet above the swing bridge has a clearance of 28 feet. A private special purpose buoy at the mouth of Weems Creek marks a speed controlled area.

Forked Creek, on the north side of Severn River 9 miles above the mouth, has depths of 16 to 10 feet for most of its 0.4 mile length. Marine services are on the creek with 4 to 6 feet available alongside. Berths, electricity, water, ice and launching ramp are available. A marine railway can handle crafts to 50 feet; lift tot 9 tons for full hull and engine repairs.

Round Bay, an expansion of Severn River beginning 6 miles above the mouth and continuing for 2 miles, has depths of 17 to 23 feet and is traveled extensively by motorboats. Little Round Bay, west of Round Bay, has depths of 17 to 19 feet, and is marked by daybeacons. Depths of 4 feet can be carried to a boat yard in Browns Cove, behind St. Helana Island. Berths, electricity, gasoline, diesel fuel, water, ice, launch ramp, pump out station, storage and some marine supplies can be obtained. A 35 ton lift is available for hull and engine repairs.

Whitehall Bay, on the west side of Chesapeake Bay, is between Greenbury Point (38°58.5'N., 76°27.3'W.) and Hackett Point, 1.5 miles to the northeastward. The bay has general depths of 13 to 6 feet. The entrance channel is about 300 yards wide between Whitehall Flats on the west and North Shoal on the east, both with depths of 3 to 4 feet; a light marks the western limit of North Shoal. A lighthouse at Sharps Point, on the west side of the entrance to Whitehall Creek Entrance Light 2W, provides a well-marked approach to the channel between North Shoal and Whitehall Flats.

Mill Creek, which empties into the northwest corner of Whitehall Bay, is entered through a privately dredged entrance channel marked by a light and daybeacons; in 1998, the reported controlling depth was 7 feet. The depths above the dredged channel are 7 to 14 feet for 1.5 miles to near the head of the creek. Gasoline is available at a pier 0.7 mile above the entrance. A marine railway, 1.3 miles above the entrance, can handle boats up to 40 feet. Gasoline and water are available just west of the railway.

Whitehall Creek, which empties into the northeast corner of Whitehall Bay, has depths of 9 to 13 feet for 0.5 mile farther up. The narrow, crooked entrance channel is marked by lights and daybeacons. In 1998, shoaling to 6 feet was reported in the channel between daybeacons 4 and 5. A 35-ton lift is available on the east side of the creek, 1 mile above the mouth.

Meredith Creek, in the northeast corner of Whitehall Bay just eastward of Whitehall Creek, has depths of about 2 feet in a very narrow entrance, thence 10 to 7 feet for 0.7 mile, and then shoals gradually to 1 foot at the head, 0.6 mile farther up. Local knowledge is necessary to carry more than 2 feet through the entrance. (125) A fish haven, marked by a buoy, is about 1 mile eastward of Hackett Point.

Chesapeake Bay Bridge, the two spans of the William P. Lane, Jr. Memorial Bridge (U.S. Route 50/301) (see also charts 12270, 12263), 130 miles above the Virginia Capes, are 3.7 miles long from shore to shore; the western end is 0.5 mile southwestward of Sandy Point, and the eastern, or Kent Island end, is 4 miles south-southwestward of Love Point.

The suspension spans over Chesapeake Channel 1.4 miles from the western end of the bridge have a least width of 1,500 feet and a least clearance of 182 feet. Flashing red aero lights are mounted on top of the

two suspension towers. Three fixed white lights are mounted vertically at the center of Chesapeake Channel spans over fixed green range lights. Fog signals are mounted on the south and north sides of the bridge at the center of Chesapeake Channel spans.

The fixed spans over Eastern Channel 1.2 miles from the eastern end of the bridge have a least width of 690 feet and a clearance of 58 feet. The center of the spans is marked by a range of two green lights. A fog signal is at the span center.

Red lights mark the ends of the bridge piers, except those adjacent to Chesapeake Channel, between points

0.3 mile from the western end and 1 mile from the eastern end. Lighted buoys mark Chesapeake Channel on either side of the bridge. The abandoned Sandy Point-Matapeake Ferry Terminal is just south of the west end of the bridge.

Sandy Point State Park is just north of the west end of the bridges. In August 1998, the reported controlling depth was 5½ feet in the State-maintained entrance channel and basin at Mezick Ponds. The channel and basin are privately marked by lights and daybeacons. Slow no-wake signs are posted in the entrance channel and in the basin. Gasoline, diesel fuel, water, ice, a pump-out station, and some marine supplies are available; overnight mooring is prohibited except in emergency.

Sandy Point Shoal Light (39°00'57"N., 76°23'04"W.), 51 feet above the water, is shown from a red brick house with a white roof, on a brown cylindrical pier about 0.4 mile northeastward of Sandy Point. The light is about 0.5 mile west of a point on the bay ship channel 131.5 miles above the Capes.

Baltimore Light (39°03'30"N., 76°24'00"W.), 52 feet above the water, is shown from a white, octagonal house on a brown cylindrical pier, in depths of 22 feet, 2.5 miles north of Sandy Point.

Magothy River, on the west side of Chesapeake Bay 1.7 miles westward of Baltimore Light, has depths of 10 feet or more for 6 miles, thence 4 feet for 0.5 mile to within 0.2 mile of a fixed highway bridge. There are many excellent anchorages in the numerous tributaries, and the area is a favorite cruising ground for pleasure craft. The critical points along the lower half of the channel in Magothy River are marked. Minimum wake areas and a 6-knot speed limit are enforced in many parts of the river and in most of the coves and creeks that flow into the river. These areas are marked by regulatory markers. The entrance to Magothy River is between Persimmon Point and Mountain Point, 0.4 mile to the north-northeastward. Mountain Point, the southernmost extremity of Gibson Island, is a sandy spit making out from a high wooded bluff. The current velocity is 0.6 knot on the flood and 0.3 knot on the ebb in the entrance to Magothy River.

Deep Creek, marked through the entrance, is on the south side of Magothy River 0.5 mile above the mouth. The creek has depths of 7 to 5 feet for 0.6 mile to near the head. Gasoline, diesel fuel, water, berths, and some marine supplies are available at marinas in the creek. Hull and engine repairs can be made; lift, 25 tons.

Sillery Bay, on the north side of Magothy River along the west side of Gibson Island, has general depths of 8 to 13 feet. The bay is the approach to Magothy Narrows and the harbor on the north side of Gibson Island; the eastern shore of the island is connected with the mainland on the north by a causeway.

The marked channel through Magothy Narrows has depths of about 10 feet, and there are depths of 9 to 10 feet in Inner Harbor. The Gibson Island Yacht Club has facilities in Inner Harbor.

A marine service pier on the east side of the entrance to Redhouse Cove, at the west end of Inner Harbor, has reported depths of 7 feet at the outer end. The boatyard can haul out craft up to 50 feet for repairs.

Cornfield Creek, which flows into the eastern end of Magothy Narrows, has depths of 7 feet nearly to its head. Gasoline, diesel fuel, water, berths, and some marine supplies are available just above the mouth.

Grays Creek, in the northwest side of Sillery Bay, has depths of about 3 feet over the entrance bar through a narrow marked channel which leads to deeper water inside the creek. A marina just inside the north prong has berths with electricity, gasoline, diesel fuel, water, ice, a pump-out station, a 30-ton travel lift, and some marine supplies. Hull and engine repairs can be made.

Broad Creek, marked by daybeacons off the entrance, is on the north side of Magothy River 2.5 miles above the mouth. The creek has depths of 9 feet or more to a marine in the upper end of the creek.

Blackhole Creek, on the north side of Magothy River 3.5 miles above the mouth, has depths of 7 feet in a narrow marked entrance channel, and 5 or more feet almost to the head. A special anchorage is in the cove on the west side of Blackhole Creek 0.2 mile above the entrance.

Mill Creek and Dividing Creek have a common entrance on the south side of Magothy River, 3.8 miles above the mouth. Depths of 8 to 12 feet can be carried in both creeks for about 0.3 mile. A small-craft facility just inside Mill Creek has gasoline, water, berths, and marine supplies. Hull and engine repairs can be made; lift, 20 tons.

Cypress Creek, is on the southwest side of Magothy River 4 miles above the mouth. The creek is entered by a narrow, marked dredged channel. In 1966, the channel had a controlling depth of 7 feet. Depths of 9 feet are inside the creek, with gradual shoaling to the flats at the head. Hull and engine repairs can be made at a boatyard on the east side of the creek just inside the entrance. A 25-ton lift is available.

Gasoline, water, and marine supplies are available on the southwest side of Magothy River, 5 miles above the mouth. Repairs can be made; lift, 25 tons

## Tips

Fight that seasick feeling with Tums or Roloids. Saltine crackers seem to work, too. Be sure you not only have a seasick remedy on board, but that you have enough of it.

Explain to everyone the man overboard procedure: Whoever sees the action must yell "Man Overboard" and keep the person in view. Next, the helmsman brings the boat about as the observer continues to keep a constant watch on the person in the water. This role is very important as the victim can be hard to spot in any sea conditions.

Put a life jacket on while swimming. It is a practical way of becoming accustomed to the feel of a life jacket and could make the difference between panic and calm in an emergency. This applies to adults and children.

Remove gas smell from your hands quickly by rubbing them with moistened kitchen salt.

**Oak Grove Marina would like to give special consideration to Chris Bechler for the provided information**